

## 198-00-0038-0: Pendant Clip

1~ & 2~ Suspension mechanical coupler  
120 / 277V

**Material:** Couplers are fabricated of extruded aluminum profiles colored to match track. Each are equipped with encased side securing mechanical points to secure coupler to ceiling track.

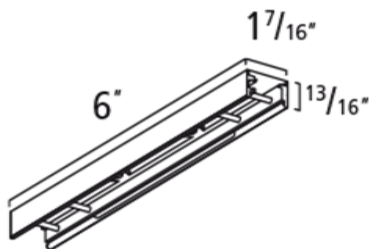
**Color:** -1: White, -2: Black, -3: Silver Anodized

**Securing:** Pendant clip is used with steel A/C cable or 3/8" threaded rod. (Threaded rod and cable/ cable gripper must be ordered separate.)

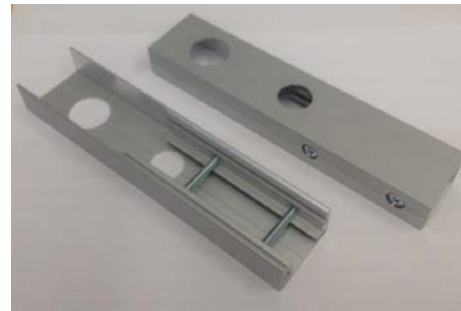
**Threaded Rod:** Rod is secured to coupler by means of 3/8IPS lock nut. Clip has a hex lock nut encased to secure to rod on the threaded end. (See line art)

**Pendant Cable:** Cable Kits are available in various styles that secure to clips with cable grippers.

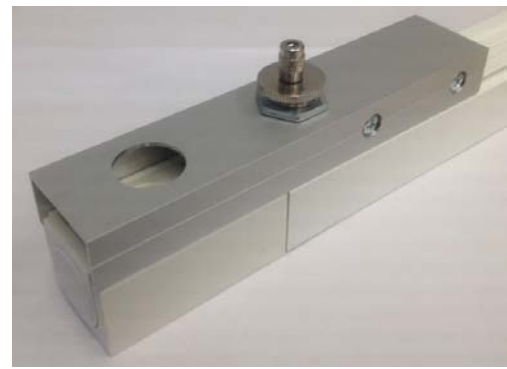
**Installation:** Before securing couplers to track loosen but donot remove side locking fasteners (2) on suspension devices. Coupler snaps onto the ceiling track (230, 233, 235, 238, 242 series)



Overall Size: 6"L x 1 7/16"W  
(152mm x 37mm)



The above photo shows the 2 side securing mechanical points.



6" clip, cable support, end feed and track shown above.

The above photo shows the **198-00-0038-03** clip attached to the track covering the live end feed. Notice the 2 screws are located over the track not the end feed.

The clip is equipped with a hole that allows the power source to go through to be secured to the end feed. Also a hole is supplied to except cable gripper (ordered separate) for suspended support.

This information is subject to change without notice.